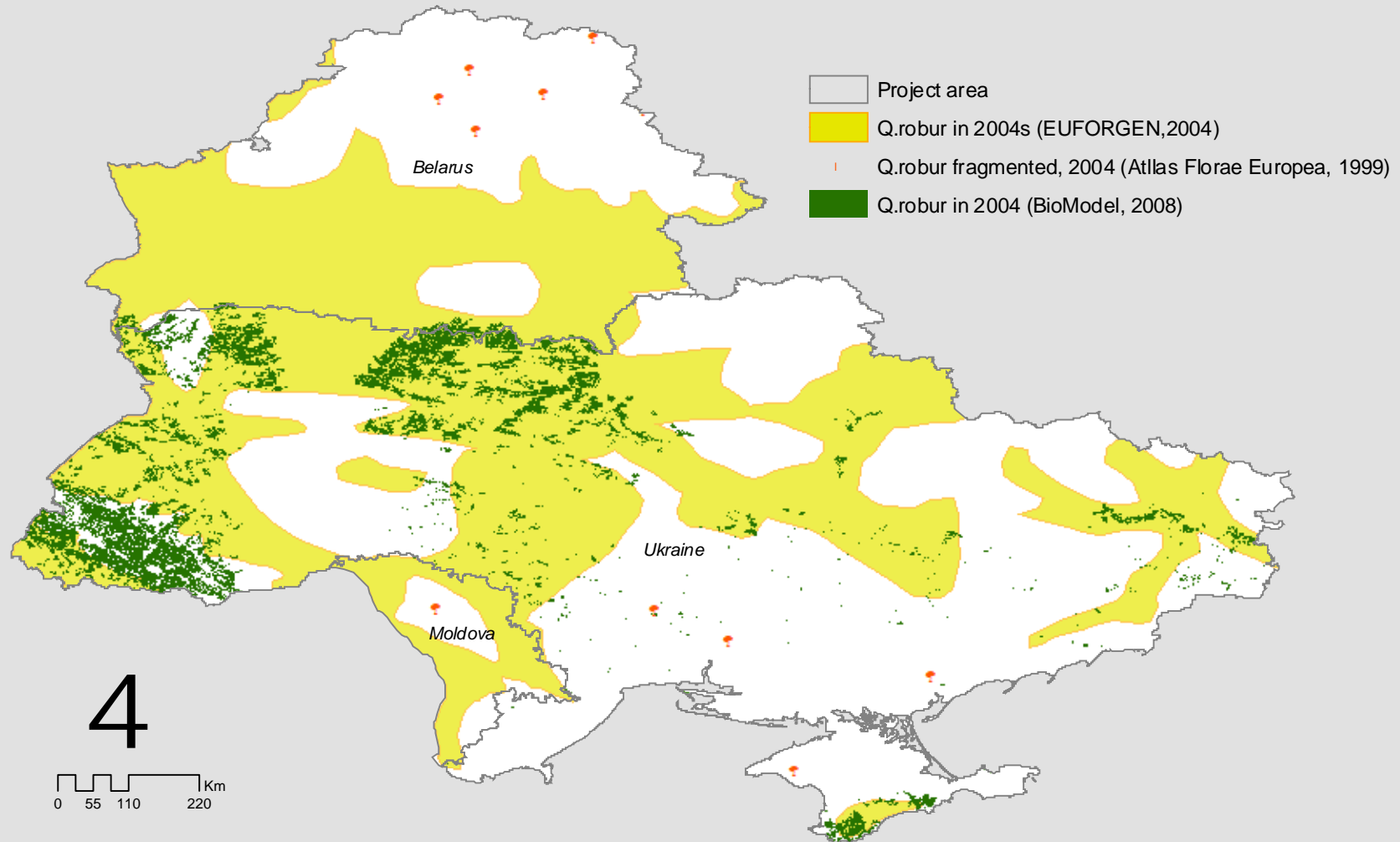


Quercus robur: expected natural habitats in Ukraine in 2004s based on RS- and GIS-analyse, and new GSF data



The map explains what digital data was selected by the BioModel Group for further GLM procedures for purposes of GLOBIO#4. Deep-green reflects real forest plots of all types based on Landsat data of 1998-2000 (Yu.Shtepa, ULRMC), which intersected all 0.5-km buffers of 1735 settlements of 20,892, which were referred to the species in scope of 2004 (based on GSF data). The map proves that previous publications did not use realistic data on location of forested areas in Ukraine in 1998-2004s.

Map author: V.Prydatko (ULRMC). Last update: April 21, 2008.